



News Letter

3rd Edition
- July 2023 -

MONCAS Auspice Exhibitions: April - June 2023

Monash Community Arts Society Inc presented a remarkable series of auspice exhibitions at the Track gallery during the last quarter. **Sara Fung's** debut solo exhibition, titled '**How Do You Do**' provided a captivating glimpse into her world through stunning paintings and sketches.

Anudepa Kadiresan, in her own solo exhibition, '**Traditions to Cherish**' beautifully showcased Indian traditions and culture using Tanjore and mixed media works, infusing the gallery with vibrant colours.

Diary dates with MONCAS

5 August

**Art Connect Workshop –
Drawing Illusions**

*Please join us with Julie Slade
in the Craft Room, Mt
Waverley Community Centre*

27 July

MONCAS Online Meetup

1 – 10 Dec

Festive Gifts Exhibition

The year concluded with the '**Art Connect 2023**' Exhibition, the second members' exhibition, generously supported by the City of Monash.

This exhibition featured 18 talented members' art with over 75 artworks, displaying the diverse talents within our community. The event was officially inaugurated by Indu Dehipola, Branch Manager of Community Bank Pinewood, and Dr. Carina Garland, Member for Chisholm, graced the occasion with her presence.

Throughout the exhibition period, it attracted more than 200 visitors from the community.



Art Connect 2023 Exhibition
Opening Night



Acknowledgement of Country

MONCAS acknowledges the Traditional Owners of the Kulin Nations whose lands on which we work. We pay our respects to the Wurundjeri & Bunurong Peoples, recognising their continuing connection to lands, waters & communities. We pay our respect to their Elders past, present and emerging.

Thank you to our Supporters

The MONCAS committee wish to thank **the Community Bank Pinewood part of Bendigo Bank** and the **Rotary Club of Oakleigh Clayton Huntingdale** for their continued support. Both organisations enable us fulfill our legal obligations and purchasing items we need to run our events.

Proudly sponsored by



Please follow and share our links at

www.moncas.org.au

www.facebook.com/thetrackgallery

www.instagram.com/moncas_thetrackgallery

Art Connect Project

Overview

The Art Connect project, supported by the City of Monash, offers a range of engaging art sessions and workshops, along with a two-week MONCAS member's Art Exhibition at The Track Gallery. These monthly Art Connect sessions are open to the public and are held on the first Saturday of each month at the Craft Room in Mount Waverley Community Centre. The sessions are led by talented artists, including MONCAS members, and provide participants with the opportunity to learn and explore various artistic skills.

Starting from August 2023, we will be recommencing our monthly Art Connect sessions. The inaugural session of this fiscal year will take place on 5th August at the Craft Room in Mt. Waverley Community Centre, running from 1 pm to 3 pm. The event will commence with a casual coffee and chat at 1 pm, followed by an engaging session on 'Drawing Illusions' led by Julie Slade.

Would you like to Facilitate an Art Connect Session?

The MONCAS Committee are delighted to welcome our members to showcase their unique art styles and techniques to our participants. If you would like to lead a session, please email us at reachmoncas@gmail.com. The proposal should include:

- ✓ a brief introduction about yourself
- ✓ details about your art style and practice
- ✓ the theme you propose for the workshop
- ✓ materials required.
- ✓ an image of your work
- ✓ your preferred dates from the following options: 2nd September, 7th October, 2nd December, 6th January, 3rd February, 2nd March, 6th April, 4th May, and 1st June

Please note that MONCAS provides workshop facilitators with a \$100 Artist fee for conducting these 90-minute sessions.



MONCAS Monash Community Arts Society Inc.

ART CONNECT

LEARN. CREATE. CONNECT

Drawing Illusions Workshop

With Julie Slade

FREE art/craft engagement session open to everyone!

AUGUST 5, 2023
1 PM - 3 PM

CRAFT ROOM
MOUNT WAVERLEY COMMUNITY CENTRE
47 MILLER CRES. MT WAVERLEY, VIC 3149

Enquiries: reachmoncas@gmail.com

Proudly supported by Monash Council

Proudly sponsored by



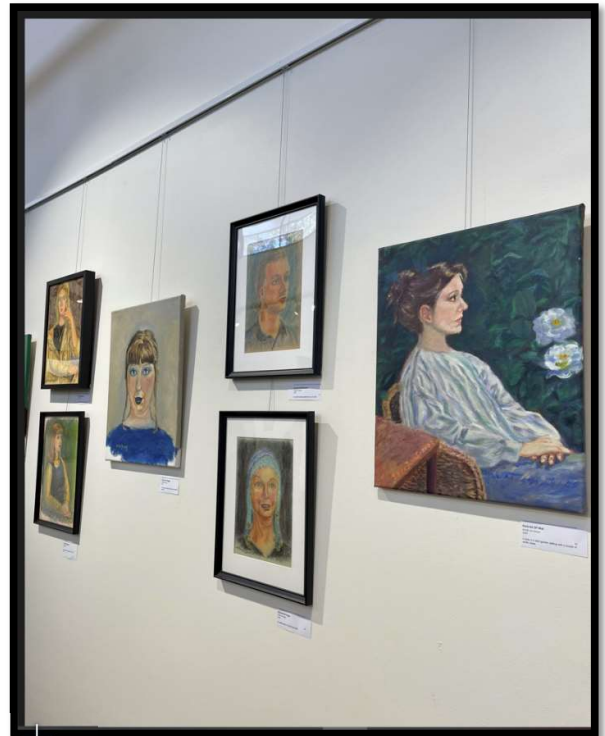
Please follow and share our links at

www.moncas.org.au

www.facebook.com/thetrackgallery

www.instagram.com/moncas_thetrackgallery

More Snapshots



Proudly sponsored by



Please follow and share our links at

www.moncas.org.au

www.facebook.com/thetrackgallery

www.instagram.com/moncas_thetrackgallery



The Next MONCAS Members' Exhibition

The first-ever **Festive Gifts Exhibition** took place in December 2022, adopting a unique approach to provide opportunities for artists, crafters, and makers in the community. They were invited to participate in a 10-day festive bazaar at the gallery. This format received a positive response, prompting the MONCAS committee to decide on its continuation this year. The event will take place from **1 – 10 December**. Further information will be shared with members by the end of next month.



The **MONCAS Online Meetup** will be held on **Thursday, 27th July 2023** where we connect with our member artists on a common topic. Further information of topic to discuss and time of the session will be forwarded via email. A zoom link will be shared after a member agrees to participate. These online discussions aim to inspire, trouble-shoot or share some guidance and not for any legal conclusive advice

Just a friendly reminder...

Please note **Membership to MONCAS** is valid between 1 July and 30 June. So, if you haven't already paid, please complete the online membership form available at www.moncas.org.au

Some of the benefits of your membership include: exclusive invitations and information reserved for members. We extend our gratitude to those who have already renewed their membership. We are delighted to welcome you back once more!



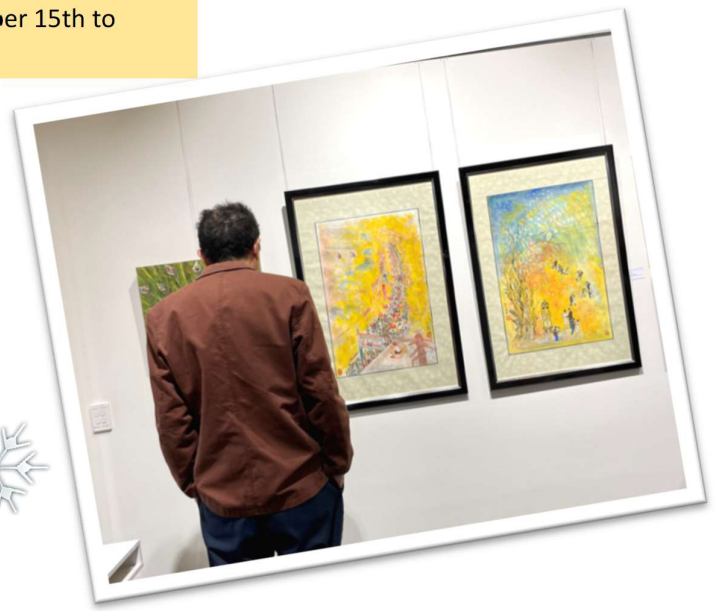
Upcoming Exhibitions at The Track Gallery

26 July - 6 August	IN FOCUS: 'Scapes by Waverley Camera Club
9 Aug - 20 August	Exhibition by Waverley Garden Club
23 Aug - 4 September	Exhibition by Clarinet Clayworks
6 Sep - 17 September	Exhibition by Mt Street Neighbourhood House

Please note: The list of exhibitions is sourced from The Track Gallery calendar, which the council shared with us. If you need more information about any specific exhibition, you can contact the respective groups involved.



The next MONCAS auspice exhibition will feature a Solo show by one of our members, scheduled to take place from November 15th to November 26th, 2023.



Proudly sponsored by



Please follow and share our links at

www.moncas.org.au

www.facebook.com/thetrackgallery

www.instagram.com/moncas_thetrackgallery



Out & About on the Local Art Trail

Reader's Input

Please let us know of any local exhibitions that you come across or other items you may like to read about in our next newsletter. Just email us at reachmoncas@gmail.com

Museum of Australian Photography (MAPh)

860 Ferntree Gully Road, Wheelers Hill

10 June – 10 September Zahalkaworld - An Artist's Archive

This exhibition encompasses material that is both personal and professional, intellectual and physical, these archival components have been incorporated into a recreation of her house-studio within the gallery space. Imaginative, immersive and playful, the exhibition invites audiences into the artist's working life and her creative process to explore the illusionary worlds for which she is renowned.



The Stan Gallery

49 Stanley Avenue Mount Waverley - www.thestangallery.com

29 June – 23 July - "Faces and Places" - a captivating new art exhibit by the incredible artist David J Morrison. Prepare to be transported to a world of bold, colourful, and reflective pieces. Witness how David delves into the depths of human emotion and explore the fascinating connections between people and the environments they inhabit. His unique vision is brought to life through vibrant brushstrokes and captivating compositions that will leave you mesmerized.



Civic Gallery

293 Springvale Road, Glen Waverley

Civic Gallery is an exhibition space designed to support and showcase Monash-based artists. Located in the foyer of the Monash Civic Centre in Glen Waverley, the Civic Gallery hosts painting, photography, drawing and works on paper.

Proposals to exhibit at Civic Gallery are accepted throughout the year. This space is available to individual or small groups of Monash-based artists.

Creative Spaces

The Creative Spaces exhibition program is an opportunity for artists, community and student groups to showcase their artwork in 4 branches of the Monash Public Library Services (Mt Waverley, Oakleigh, Glen Waverley and Wheelers Hill).

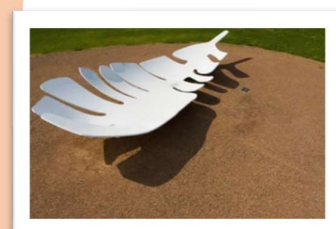
Answers to the Fun Fact Quiz from the last edition:

Question: Do you know where the mural to the right is located? **Answer:** Warrigal Road bridge underpass in Ashwood. Artist Carla Gottgens used ideas from a community workshop in to reflect nearby parklands**How many can you find in the City of Monash? **Answer:** 9



FUN FACT

City of Monash is home to many public art works which enrich the cultural and artistic diversity of the area. For example, the **Spirit of the Land** (see opposite). The Spirit of the Land is a breast feather sculpture, and a blessing from Bunjil the Creator - an important local Indigenous creation story. The sculpture is about 1m high, 9m in length and weighs about 2.5 tonnes. Can you find where it is located? **Answers:** See the next edition of this newsletter.



Proudly sponsored by



Please follow and share our links at

www.moncas.org.au

www.facebook.com/thetrackgallery

www.instagram.com/moncas_thetrackgallery